



PRINCE Dr. K.VASUDEVAN COLLEGE OF ENGINEERING AND TECHNOLOGY

(Approved by AICTE, Affiliated to Anna University & ISO 9001:2015 Certified Institution)
Medavakkam-Mambakkam Main Road, Ponmar, Chennai-600127

STUDENT FEEDBACK ANALYSIS REPORT

FEEDBACK ON SYLLABUS


DEPARTMENT OF COMPUTER SCIENCE AND ENGINEERING

ACADEMIC YEAR: 2021-2022

RESPONDENTS: 46

Strongly Agree (5), Agree (4), Neutral (3), Disagree (2), Strongly Disagree (1)						
S.no	Content	5	4	3	2	1
1.	Whether syllabus is carrier oriented	33	12	1	0	0
2.	Whether the course was well Structured to achieve course outcomes	34	8	3	1	0
3.	Rate the size of the syllabus in terms of student load	28	14	4	0	0
4.	Whether course objective is clear?	36	10	0	0	0
5.	Are the books prescribed as a text book/Reference book in related to syllabus	29	14	3	0	0
6.	Whether syllabus is relevant to real World problems?	26	16	3	1	0
7.	Whether the Syllabus is covered with Industry standards?	25	17	4	0	0
8.	Is the Syllabus in calculated necessary ethical values and concern for the society?	38	7	1	0	0




PRINCIPAL
PRINCE Dr. K. VASUDEVAN COLLEGE
OF ENGINEERING AND TECHNOLOGY
PONMAR, CHENNAI-600127

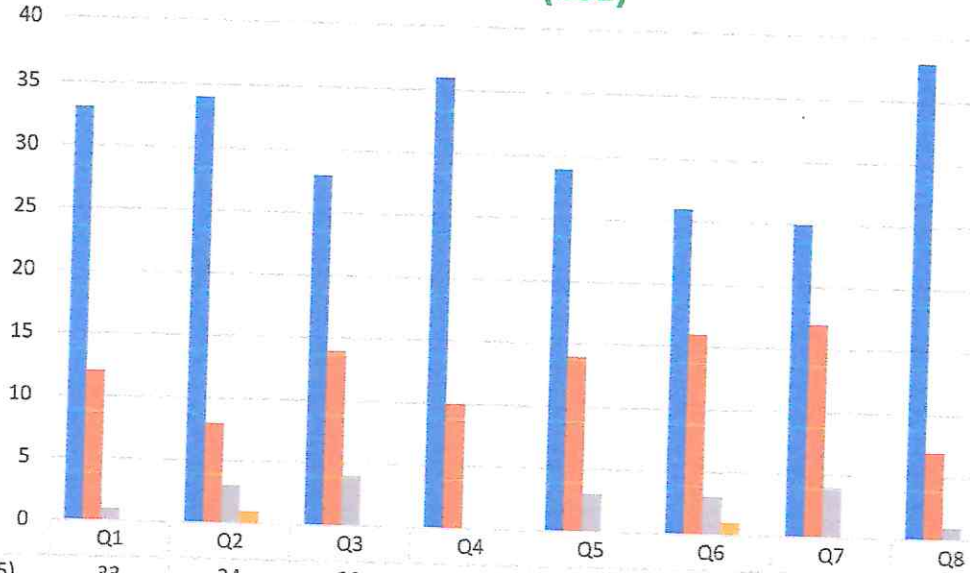


PRINCE Dr. K. VASUDEVAN COLLEGE OF ENGINEERING AND TECHNOLOGY

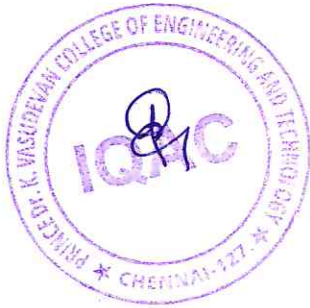
(Approved by AICTE, Affiliated to Anna University & ISO 9001:2015 Certified Institution)
Medavakkam-Mambakkam Main Road, Ponmar, Chennai-600127

STUDENTS FEEDBACK ON SYLLABUS (CSE)

RESPONDENTS-46



	Q1	Q2	Q3	Q4	Q5	Q6	Q7	Q8
Strongly Agree (5)	33	34	28	36	29	26	25	38
Agree (4)	12	8	14	10	14	16	17	7
Neutral (3)	1	3	4	0	3	3	4	1
Disagree (2)	0	1	0	0	0	1	0	0
Strongly Disagree (1)	0	0	0	0	0	0	0	0



(Signature)

PRINCIPAL

PRINCE Dr. K. VASUDEVAN COLLEGE
OF ENGINEERING AND TECHNOLOGY
PONMAR, CHENNAI-600127



PRINCE Dr. K. VASUDEVAN COLLEGE OF ENGINEERING AND TECHNOLOGY

(Approved by AICTE, Affiliated to Anna University & ISO 9001:2015 Certified Institution)
Medavakkam-Mambakkam Main Road, Ponmar, Chennai-600127

STUDENT FEEDBACK ANALYSIS REPORT

FEEDBACK ON SYLLABUS


DEPARTMENT OF ELECTRONICS AND COMMUNICATION ENGINEERING

ACADEMIC YEAR: 2021-2022

RESPONDENTS: 6

Strongly Agree (5), Agree (4), Neutral (3), Disagree (2), Strongly Disagree (1)						
S.no	Content	5	4	3	2	1
1.	Whether syllabus is carrier oriented	4	2	0	0	0
2.	Whether the course was well Structured to achieve course outcomes	4	1	1	0	0
3.	Rate the size of the syllabus in terms of student load	4	1	1	0	0
4.	Whether course objective is clear?	5	1	0	0	0
5.	Are the books prescribed as a text book/Reference book in related to syllabus	3	3	0	0	0
6.	Whether syllabus is relevant to real World problems?	3	2	1	0	0
7.	Whether the Syllabus is covered with Industry standards?	3	3	0	0	0
8.	Is the Syllabus in calculated necessary ethical values and concern for the society?	4	1	1	0	0




PRINCIPAL
PRINCE Dr. K. VASUDEVAN COLLEGE
OF ENGINEERING AND TECHNOLOGY
PONMAR, CHENNAI-600127

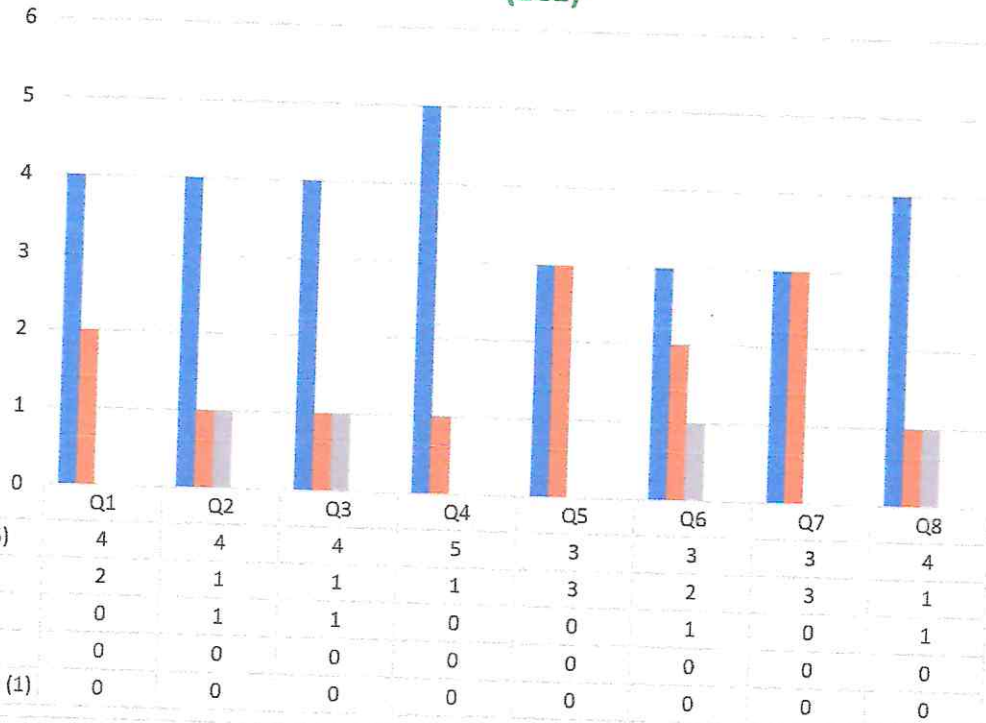


PRINCE Dr. K. VASUDEVAN COLLEGE OF ENGINEERING AND TECHNOLOGY

(Approved by AICTE, Affiliated to Anna University & ISO 9001:2015 Certified Institution)
Medavakkam-Mambakkam Main Road, Ponmar, Chennai-600127

STUDENTS FEEDBACK ON SYLLABUS (ECE)

RESPONENTS-06



PRINCIPAL
PRINCE Dr. K. VASUDEVAN COLLEGE
OF ENGINEERING AND TECHNOLOGY
PONMAR, CHENNAI-600127



PRINCE Dr. K. VASUDEVAN COLLEGE OF ENGINEERING AND TECHNOLOGY

(Approved by AICTE, Affiliated to Anna University & ISO 9001:2015 Certified Institution)
Medavakkam-Mambakkam Main Road, Ponmar, Chennai-600127

STUDENT FEEDBACK ANALYSIS REPORT

FEEDBACK ON SYLLABUS

DEPARTMENT OF MECHANICAL ENGINEERING

ACADEMIC YEAR: 2021-2022

RESPONDENTS: 6

Strongly Agree (5), Agree (4), Neutral (3), Disagree (2), Strongly Disagree (1)						
S.no	Content	5	4	3	2	1
1.	Whether syllabus is carrier oriented	5	1	0	0	0
2.	Whether the course was well Structured to achieve course outcomes	3	3	0	0	0
3.	Rate the size of the syllabus in terms of student load	3	3	0	0	0
4.	Whether course objective is clear?	4	1	1	0	0
5.	Are the books prescribed as a text book/Reference book in related to syllabus	3	3	0	0	0
6.	Whether syllabus is relevant to real World problems?	3	2	1	0	0
7.	Whether the Syllabus is covered with Industry standards?	4	2	0	0	0
8.	Is the Syllabus in calculated necessary ethical values and concern for the society?	4	1	1	0	0



PRINCIPAL
PRINCE Dr. K. VASUDEVAN COLLEGE
OF ENGINEERING AND TECHNOLOGY
PONMAR, CHENNAI-600127

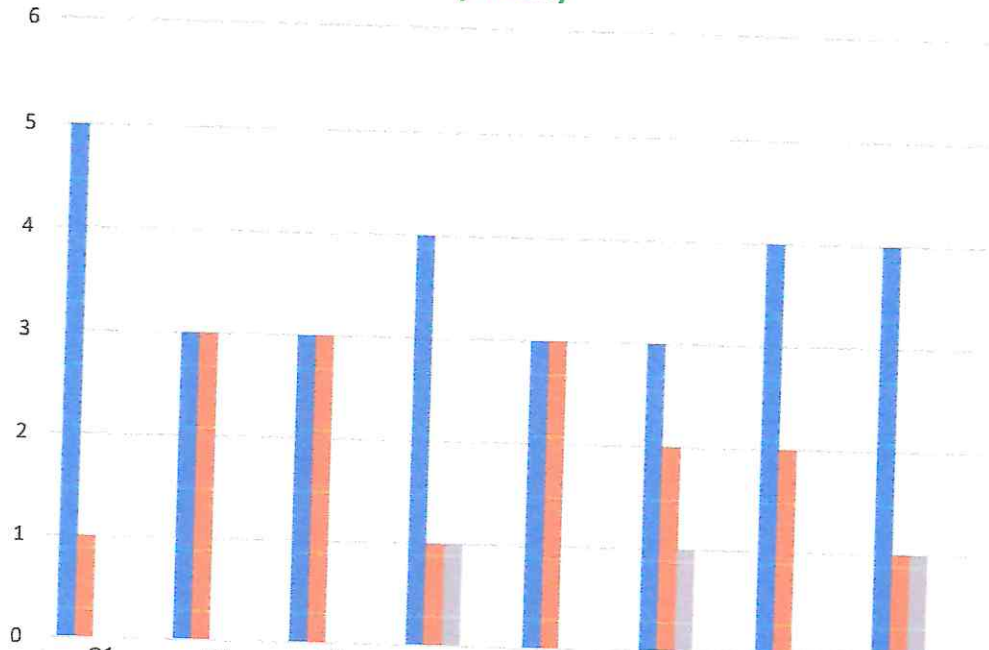


PRINCE Dr. K. VASUDEVAN COLLEGE OF ENGINEERING AND TECHNOLOGY

(Approved by AICTE, Affiliated to Anna University & ISO 9001:2015 Certified Institution)
Medavakkam-Mambakkam Main Road, Ponmar, Chennai-600127

STUDENTS FEEDBACK ON SYLLABUS (MECH)

RESPONSETS-06



	Q1	Q2	Q3	Q4	Q5	Q6	Q7	Q8
Strongly Agree (5)	5	3	3	4	3	3	4	4
Agree (4)	1	3	3	1	3	2	2	1
Neutral (3)	0	0	0	1	0	1	0	1
Disagree (2)	0	0	0	0	0	0	0	0
Strongly Disagree (1)	0	0	0	0	0	0	0	0



PRINCIPAL
PRINCE Dr. K. VASUDEVAN COLLEGE
OF ENGINEERING AND TECHNOLOGY
PONMAR, CHENNAI-600127



PRINCE Dr. K. VASUDEVAN COLLEGE OF ENGINEERING AND TECHNOLOGY

(Approved by AICTE, Affiliated to Anna University & ISO 9001:2015 Certified Institution)
Medavakkam-Mambakkam Main Road, Ponmar, Chennai-600127

STUDENT FEEDBACK ANALYSIS REPORT

FEEDBACK ON SYLLABUS

DEPARTMENT OF BIOMEDICAL ENGINEERING

ACADEMIC YEAR: 2021-2022

RESPONDENTS: 44

Strongly Agree (5), Agree (4), Neutral (3), Disagree (2), Strongly Disagree (1)						
S.no	Content	5	4	3	2	1
1.	Whether syllabus is carrier oriented	31	12	1	0	0
2.	Whether the course was well Structured to achieve course outcomes	33	8	3	1	0
3.	Rate the size of the syllabus in terms of student load	26	14	4	0	0
4.	Whether course objective is clear?	34	10	0	0	0
5.	Are the books prescribed as a text book/Reference book in related to syllabus	27	14	3	0	0
6.	Whether syllabus is relevant to real World problems?	24	16	3	1	0
7.	Whether the Syllabus is covered with Industry standards?	23	17	4	0	0
8.	Is the Syllabus in calculated necessary ethical values and concern for the society?	36	7	1	0	0



[Handwritten Signature]

PRINCIPAL
PRINCE Dr. K. VASUDEVAN COLLEGE
OF ENGINEERING AND TECHNOLOGY
PONMAR, CHENNAI-600127

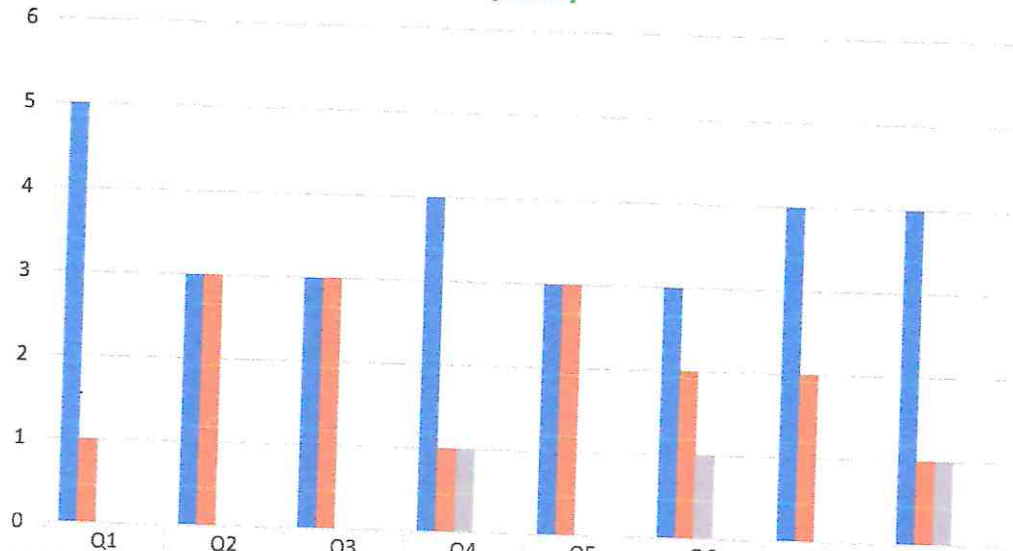


PRINCE Dr. K. VASUDEVAN COLLEGE OF ENGINEERING AND TECHNOLOGY

(Approved by AICTE, Affiliated to Anna University & ISO 9001:2015 Certified Institution)
Medavakkam-Mambakkam Main Road, Ponmar, Chennai-600127

STUDENTS FEEDBACK ON SYLLABUS (BME)

RESPONDENTS-44



	Q1	Q2	Q3	Q4	Q5	Q6	Q7	Q8
Strongly Agree (5)	5	3	3	4	3	3	4	4
Agree (4)	1	3	3	1	3	2	2	1
Neutral (3)	0	0	0	1	0	1	0	1
Disagree (2)	0	0	0	0	0	0	0	0
Strongly Disagree (1)	0	0	0	0	0	0	0	0



[Handwritten Signature]

PRINCIPAL
PRINCE Dr. K. VASUDEVAN COLLEGE
OF ENGINEERING AND TECHNOLOGY
PONMAR, CHENNAI-600127



PRINCE Dr. K. VASUDEVAN COLLEGE OF ENGINEERING AND TECHNOLOGY

(Approved by AICTE, Affiliated to Anna University & ISO 9001:2015 Certified Institution)
Medavakkam-Mambakkam Main Road, Ponmar, Chennai-600127

STUDENT FEEDBACK ANALYSIS REPORT

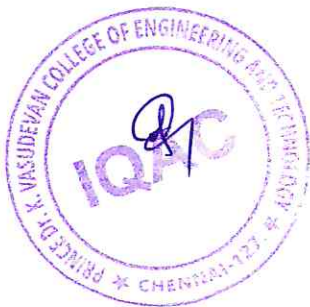
FEEDBACK ON SYLLABUS

DEPARTMENT OF ARTIFICIAL INTELLIGENCE AND DATA SCIENCE

ACADEMIC YEAR: 2021-2022

RESPONDENTS: 63

Strongly Agree (5), Agree (4), Neutral (3), Disagree (2), Strongly Disagree (1)						
S.no	Content	5	4	3	2	1
1.	Whether syllabus is carrier oriented	40	22	1	0	0
2.	Whether the course was well Structured to achieve course outcomes	41	18	3	1	0
3.	Rate the size of the syllabus in terms of student load	35	24	4	0	0
4.	Whether course objective is clear?	43	20	0	0	0
5.	Are the books prescribed as a text book/Reference book in related to syllabus	36	24	3	0	0
6.	Whether syllabus is relevant to real World problems?	37	22	3	1	0
7.	Whether the Syllabus is covered with Industry standards?	35	24	4	0	0
8.	Is the Syllabus in calculated necessary ethical values and concern for the society?	40	22	1	0	0



PRINCIPAL
PRINCE Dr. K. VASUDEVAN COLLEGE
OF ENGINEERING AND TECHNOLOGY
PONMAR, CHENNAI-600127

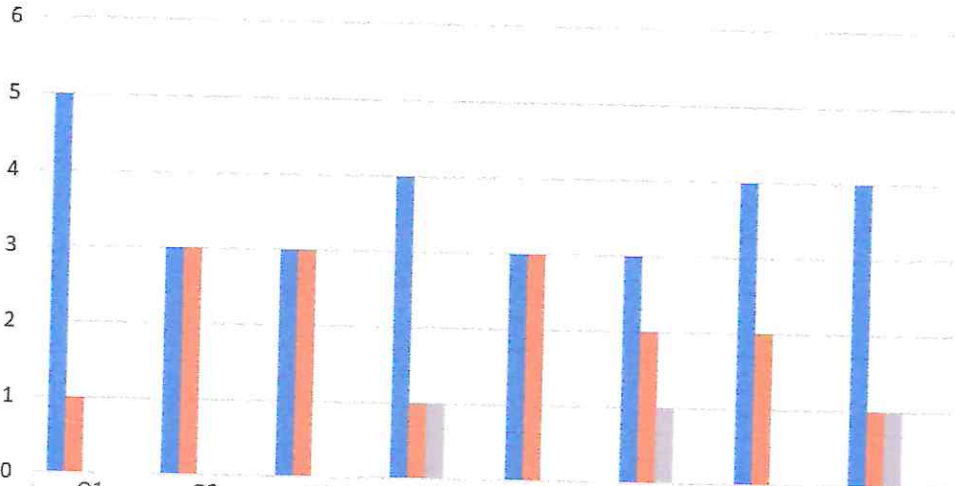


PRINCE Dr. K. VASUDEVAN COLLEGE OF ENGINEERING AND TECHNOLOGY

(Approved by AICTE, Affiliated to Anna University & ISO 9001:2015 Certified Institution)
Medavakkam-Mambakkam Main Road, Ponmar, Chennai-600127

STUDENTS FEEDBACK ON SYLLABUS (AI&DS)

RESPONDENTS-44



	Q1	Q2	Q3	Q4	Q5	Q6	Q7	Q8
Strongly Agree (5)	5	3	3	4	3	3	4	4
Agree (4)	1	3	3	1	3	2	2	1
Neutral (3)	0	0	0	1	0	1	0	1
Disagree (2)	0	0	0	0	0	0	0	0
Strongly Disagree (1)	0	0	0	0	0	0	0	0



[Signature]

PRINCIPAL

PRINCE Dr. K. VASUDEVAN COLLEGE
OF ENGINEERING AND TECHNOLOGY
PONMAR, CHENNAI-600127